

Subject: Kingpin kits for RSS-232 8/13K



Date: 6/30/11

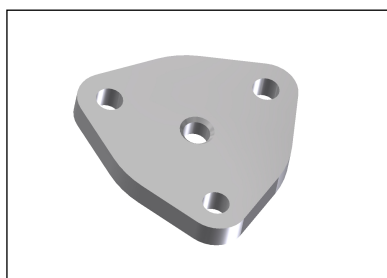
Engineering Product Announcement Number: EPA #272

Effective: Immediately

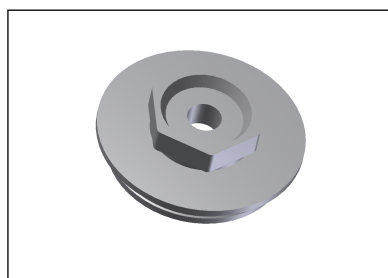
Below is information to select Ridewell kingpin kit part numbers for RSS-232 8 and 13k products.

Due to the use of Meritor and Westport steer knuckles for the 13k product, care must be exercised to identify the correct kingpin kit. Visually, the Meritor and Westport caps are different as shown in the figures. To determine if the kingpin is a standard or Kaiser type, please refer to the suspension part number. In the installed condition, a standard and Kaiser setup are visually the same.

It is permissible to replace the standard kingpin with the Kaiser part number.



Meritor Cap



Westport Cap

	RSS-232 Kingpin kit part numbers			
	Meritor		Westport	
CAPACITY	Standard	Kaiser	Standard	Kaiser
8K	1660170	--	--	--
13K	1660106	1660261	1660317	1660319

Questions can be directed to Mike Jurgens or Matthew Koontz.

Distribution

D. Carney	G. Tombridge	J. Raidel	J. Robertson	Engineering	S. Montgomery
R. Rickman	Tom Baker	J. Svoboda	J. Millsap	FF Advisors	Inside Sales
RSM's	C. Stratton				

Ridewell Suspensions
P.O. Box 4586
Springfield, MO 65808
1-800-641-4122
Fax (417)833-4560

Product Update